

BAMBI *Beauty* & CO.

PRICE LIST LASH COURSES

Hosted by Candice Gillys

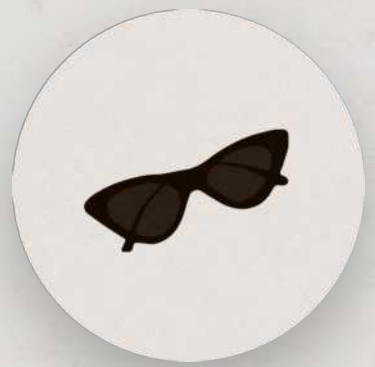
www.bambibeautyco.com
417 Highland Road, Kensington
 [bambibeautyandco](https://www.instagram.com/bambibeautyandco)



OUR COURSES

All Academy Courses Include

In-depth Theory Manual
Interactive Activities
Learning Exercises
Live Model Practise
Certification (upon graduation)
Extended Education
Product Exclusives
Industry Updates
FAQ Updates
Master Classes
On-hand Private Support
Tips and Tricks
Access to Top Quality Equipment & Products



Please Note

During practical days, we supply all of the products and disposables needed so that you do not use your own kit during training.

COURSE 1

R2 500.00

Classic Training

Our classic training is a one day course that includes a theoretical component followed by a demonstration and a practical application. Classic lash extensions are an application an individual lash extension to each natural lash. The lashes are perfectly separated for comfort and a non-damaging wear.

The Aesthetic Artistry Lash.Lash was designed by Erika Davis herself. The products are virtually weightless, soft and will never damage the natural lash. Various sizes and shapes of lash extensions are available in diamond silk and faux mink.

Covered in this Course

- Classic Individual Lash Extension Application
- Classic Refills
- Removal Process
- Aftercare & Extra Tips

Course Info

- All models you need for your practical will be arranged by Erika Davis Aesthetic Artistry
- There are no prior requirements needed to attend, however background in beauty will be to your advantage.

Kit Cost

R3 800.00

* This will allow you to do your first 50 clients

Volume Training

Our volume lash training is a one day course. We will focus on the theoretical application of volume lashes and then move onto practical application. In volume lash extension training the focus is on how to manually build 2D, 3D and 5D flares by hand and how to apply these to a single individual eyelash for a perfect fluffy, Russian volume style set. The customisation of the kit is done in order to suit the individual needs after completion of the course.

Covered in this Course

- Volume Lash Extension Application
- Volume Refills
- Removal Process
- Aftercare & Extra Tips

Course Info

- All models you need for your practical will be arranged by Erika Davis Aesthetic Artistry
- You must have attended a basic training through us or another institute.

Kit Cost

STARTING FROM : R1 500.00

* This kit will be customised according to your needs

AFTER COURSES

Hosted by Candice Gillys

On your lash journey so far you've been learning the fundamental skills of lashing and building up your lash skillset. In this after course you will focus mostly on the theory of learning how to put it all together. Learning what to use, where to use it and who it suits best is fundamental to becoming successful at lashing. We examine each of the curls and how they can be used in different effects. In-depth explanations on how different curls interact with each other and how their differences can be used to benefit clients will be given in this course.

We will expand your knowledge by providing explanations on how to create different effects with the lashes you now understand how to apply. We will also discuss the way in which specific effects will suit clients with various eyes. Eye styling is an aspect that is underestimated by many, and in our opinion is absolutely crucial to helping create the correct style. If you do not take this seriously when lashing your clients, you will not be ensuring that you are providing the highest quality of lashing.

This course is mainly theory based and will help to give you in-depth knowledge from professionals with years of experience and fully booked client lists. Creating bespoke lash sets will give you the ability to create a return on your customers, and this is what we are all striving for.



COURSE 3

R2 500.00

Mapping, Marketing & Photography

Our majority theory based course will help you to gain in-depth knowledge around eye styling, guidance as a lash tech to lash artist in bespoke lash extensions, mapping, creating a brand identity, marketing your brand and showcasing your work. Understanding lash shapes, face shape, brow shapes, colourings and other elements that will impact the final outcome of your work is a large aspect of this course. Building up your understanding of lash fundamentals is crucial to your longevity as a technician. Ensuring your brand is trustworthy, noticeable and memorable is a very important feature of your work and we will focus heavily on the impact it can have on your income.

Covered in this Course

- The Curls
- Mixing Curls
- Elongate the Eye
- Textured Curl Effects
- Seamless Sweep
- How to safely use multiple extensions
- Creating Effects & Feathering
- Eyeliner Effect & Creating Texture
- Use of Colour
- Eye Shapes & Eye Styles
- Eye Style Charts & Face Shapes
- Style Guides
- Creating a Brand Identity
- Planning, Social Media, Promotions
- Advertising
- Instagram, Facebook & your Feed
- Photographing your Work & Styling your Work
- In-Depth Tips & Tricks

COURSE 4

R2 500.00

Marketing & Photography

If you've already fine tuned your lash skills or aesthetics and are a well established technician, then let us help you to create brand awareness, memorability and rapport. Marketing is crucial to your longevity as a brand and will help you to create a community of engagement, rather than a portfolio catalogue of your work. Learn how to use social media to your advantage in the beauty industry. Creating a good balance between lifestyle, product, business and personal is what people will be attracted to. Learn how to showcase your work in a professional and aesthetic way without breaking your bank. This course has been created by using Bambi Beauty & Co. as a prime example and the knowledge of a specialist in this field.

Covered in this Course

- Creating a Brand Identity
- Planning, Social Media, Promotions
- Advertising
- Instagram, Facebook & your Feed
- Photographing your Work & Styling your Work
- In-Depth Tips & Tricks

CONTACT US

For Available Dates & Slots

Contact Candice Sills

+27797491442

www.bambibeautyco.com

